

UBITECH PRIVATE LIMITED

1D/10, 11 B.P.N.I.T
Faridabad, Haryana 121001

0129-2424488

info@ubitechonline3.com



www.ubitechpvtltd.com



EXPLORING POSSIBILITIES WITH
INNOVATIVE SOLUTIONS



EMPOWERING INDIA



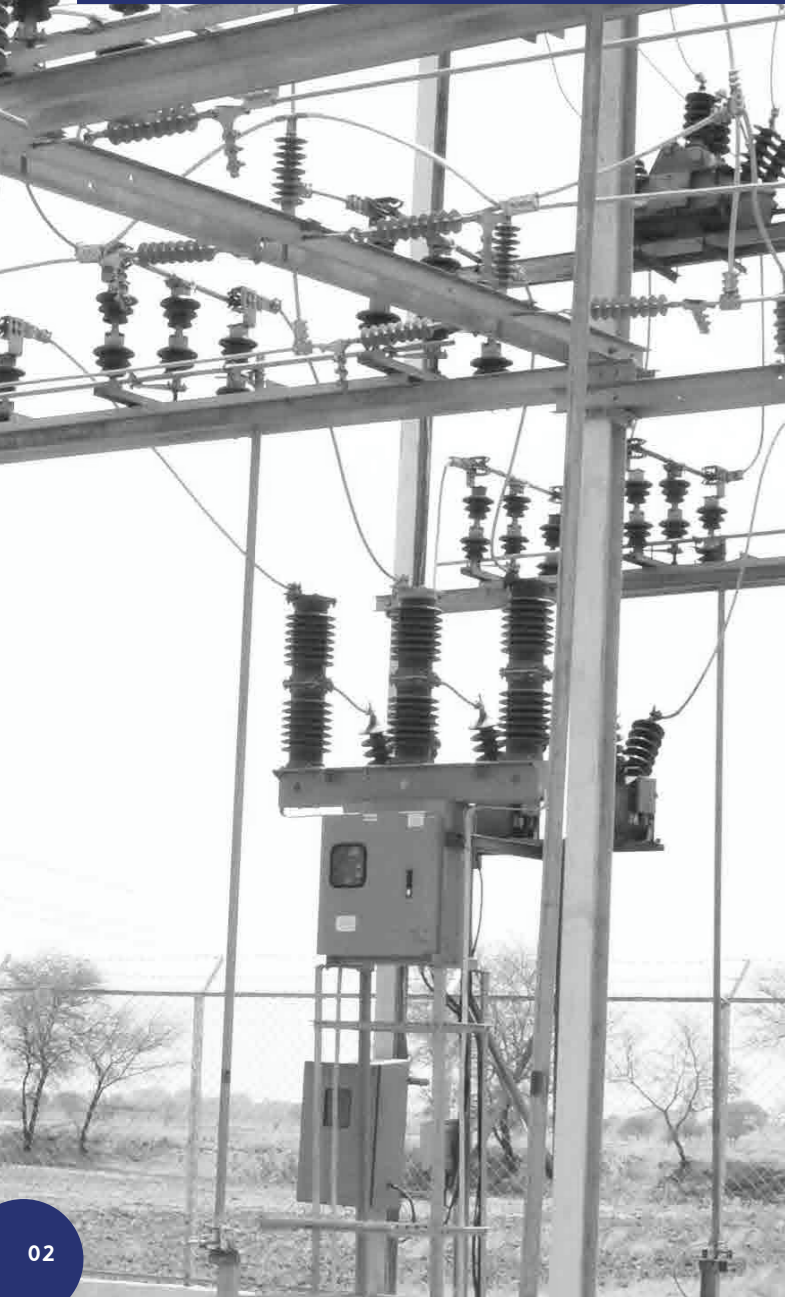
OUR
STRATEGIC
VISION

We truly believe in identifying, assessing, and confronting risks, while evaluating options to widen our immediate, mid-term, and long-range growth horizons.



We have a
plan
and it is,

**DOING THE RIGHT THINGS,
IN A RIGHT WAY**



OUR VISION

At the intersection of innovation and engineering, we want to emerge as the foremost and esteemed commercial electrical contractor and service provider within the region, known for our unparalleled professionalism, adherence to safety and commitment to sustainable excellence. Further, we recognize our clients' value for preventive and proactive maintenance which fosters not only peace of mind but also a strong sense of confidence in our services.

OUR MISSION

With unwavering dedication, we aspire to shape a brighter future that harmonizes mobility and energy in harmony with the world we share.



OUR ILLUSTROUS STORY

Our fifth-generation firm stands as an unwavering testament to trust and reliability. Carving a niche with an illustrious heritage spanning nearly eight decades, we have fifth-generation, unparalleled electrical and manufacturing services. Our profound expertise and unwavering dedication to perfection have firmly established us as the go-to partner for a myriad of government and private sector ventures. Looking at the future prospects, we are aligned to take this success story further and higher.

COMPANY'S MILESTONES



2008

Establishment of a new plant in Chennai dedicated to automobile manufacturing and a press shop, reinforcing the company's diverse operational facets

2018

Initiation of a new press shop plant in Faridabad, fostering continued growth and geographical expansion

2021

Expansion of the automobile manufacturing plant to Pune, marking a strategic advancement in the company's regional presence and capabilities

2022

Acquisition of Velocity, a milestone underscoring the company's commitment to strategic growth and market consolidation

2023

Induction of the fifth generation, demonstrating the continuity of family leadership and the company's enduring legacy in the industry

2004

Inauguration of a new panel manufacturing plant in Chennai, signifying the company's commitment to expansion and innovation

1992

Raaj & Saaj Pandey, emblematic of the fourth generation, joined the company, further enriching its legacy and expertise

1981

Commencement of panel manufacturing under Panel Builder Pvt Ltd., laying the groundwork for enhanced production capabilities

1945

Initiation of Electrical Contracting in Kolkata by the founder Rishab Dev Pandey, establishing the foundational roots of the company

1951

Surya Bhushan Pandey, representing the second generation, became an integral part of the business, contributing significantly to its growth and development

1972

Om Prakash Pandey, marking the onset of the third generation's involvement, expanded the Electrical Contracting operations to Faridabad

1979

The company diversified into electrical switchgear trading, broadening its scope of offerings and services



O.P. Pandey Managing Director

To Our Valued Ubitech Community,

I am filled with a profound sense of honor and heartfelt gratitude as I share with you the extraordinary journey of our company. Inheriting the vision of my grandfather, I embarked on a transformative quest that broke geographical barriers and redefined industry standards.

From our humble beginnings in Kolkata, the responsibility of upholding and enriching my grandfather's legacy was a task I embraced with determination and a commitment to the highest standards of excellence. Our entry into the world of electrical contracting and switchgear trading was just the beginning of a multifaceted journey marked by resilience, innovative spirit, and strategic foresight.

A decade of unwavering effort and strategic foresight launched us into manufacturing. This significant expansion led to the establishment of automobile manufacturing facilities and a state-of-the-art press shop in Chennai, symbolizing our dedication to excellence.

However, our journey continues. Driven by fervour and devotion to our field, we have expanded our presence across India. Each new facility stands as a symbol of our commitment, embodying our ambition, pledge to service, and innovation.

Our path has also been punctuated by strategic acquisitions, each underscoring our determination to evolve, adapt, and lead in industry innovation.

Each effort, each decision, is a reflection of our commitment to collective success. This journey is more than just business; it's a labor of love, echoing my deep loyalty to our company's mission and legacy.

As we continue forward, our determination remains steadfast, and our vision clear. Together, we are writing a story of resilience, growth, and unwavering dedication to our craft.



THE VISIONARIES



Raaj Pandey Director

To Our Valued Customers and Partners,

As we reflect on our journey at Ubitech, I am filled with immense pride at our collective achievements. It's a privilege and a honor to lead a community that exemplifies such passion, dedication, and unwavering commitment to excellence.

Our story is more than a narrative of success; it's a testament to resilience, foresight, and a relentless pursuit of greatness. My personal drive to make a meaningful impact in the world of work began at a young age, and being the fourth generation in our esteemed family business, I embraced our legacy with a sense of duty and a vision to elevate our electrical contracting division to new heights.

Under our unified vision, Ubitech's name has become

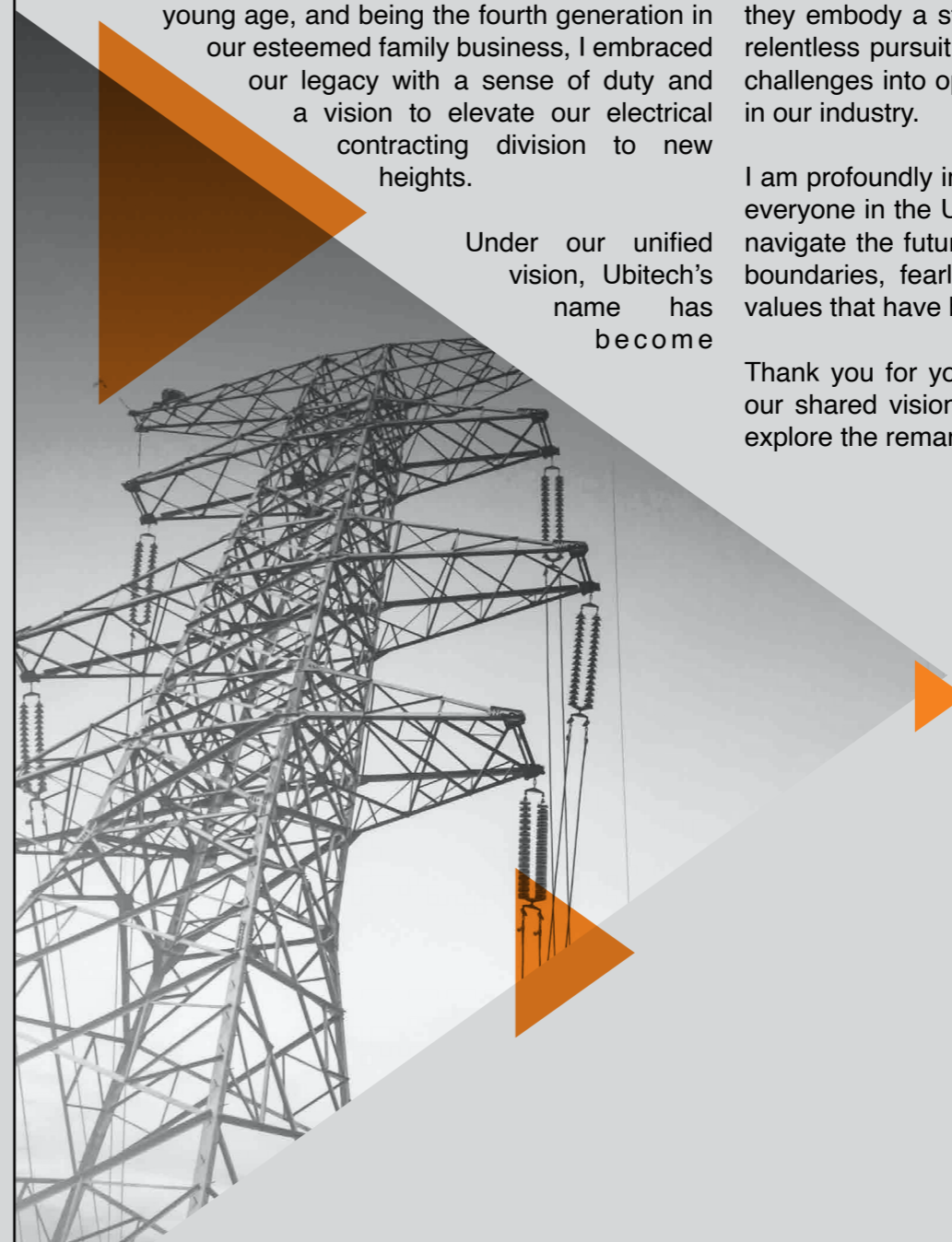
synonymous with innovation and quality across every state's electric board. Our journey extended into manufacturing board-certified products, a step that further exemplifies our commitment to excellence.

The cornerstone of Ubitech's success is our collective hard work, foresight, and the vision to transcend the ordinary. This approach has not only tripled our annual turnover in a short span but also solidified our commitment to unparalleled quality.

Our achievements extend beyond mere numbers; they embody a story of perseverance, teamwork, and relentless pursuit of excellence. We have transformed challenges into opportunities, setting new benchmarks in our industry.

I am profoundly inspired by the spirit and dedication of everyone in the Ubitech community. As we continue to navigate the future, let's remain committed to pushing boundaries, fearlessly innovating, and upholding the values that have brought us to where we are today.

Thank you for your steadfast dedication and belief in our shared vision. Together, we are just beginning to explore the remarkable milestones that await us.





**ELEVATING
BUSINESSES
WITH EXCEPTIONAL**

UNMATCHED COMPETENCIES

Turnkey Services

Since our inception in 1983, we at Ubitech Pvt. Ltd. has redefined excellence in electrical engineering and contracting. Our unwavering commitment to quality has propelled us to the forefront of the industry.

Manufacturing Services

As a trailblazing force, we take a world of pride in manufacturing state-of-the-art 11KV VCB INDOOR/ Outdoor VCB and controls. Our products reflect the epitome of precision and reliability, setting new standards in the field.

Power Press

In the realm of power press, Ubitech Pvt. Ltd. reigns supreme. For years, we have been hailed for delivering power presses that are not only sophisticated but also uncompromisingly safe and dependable.

Automobile Components

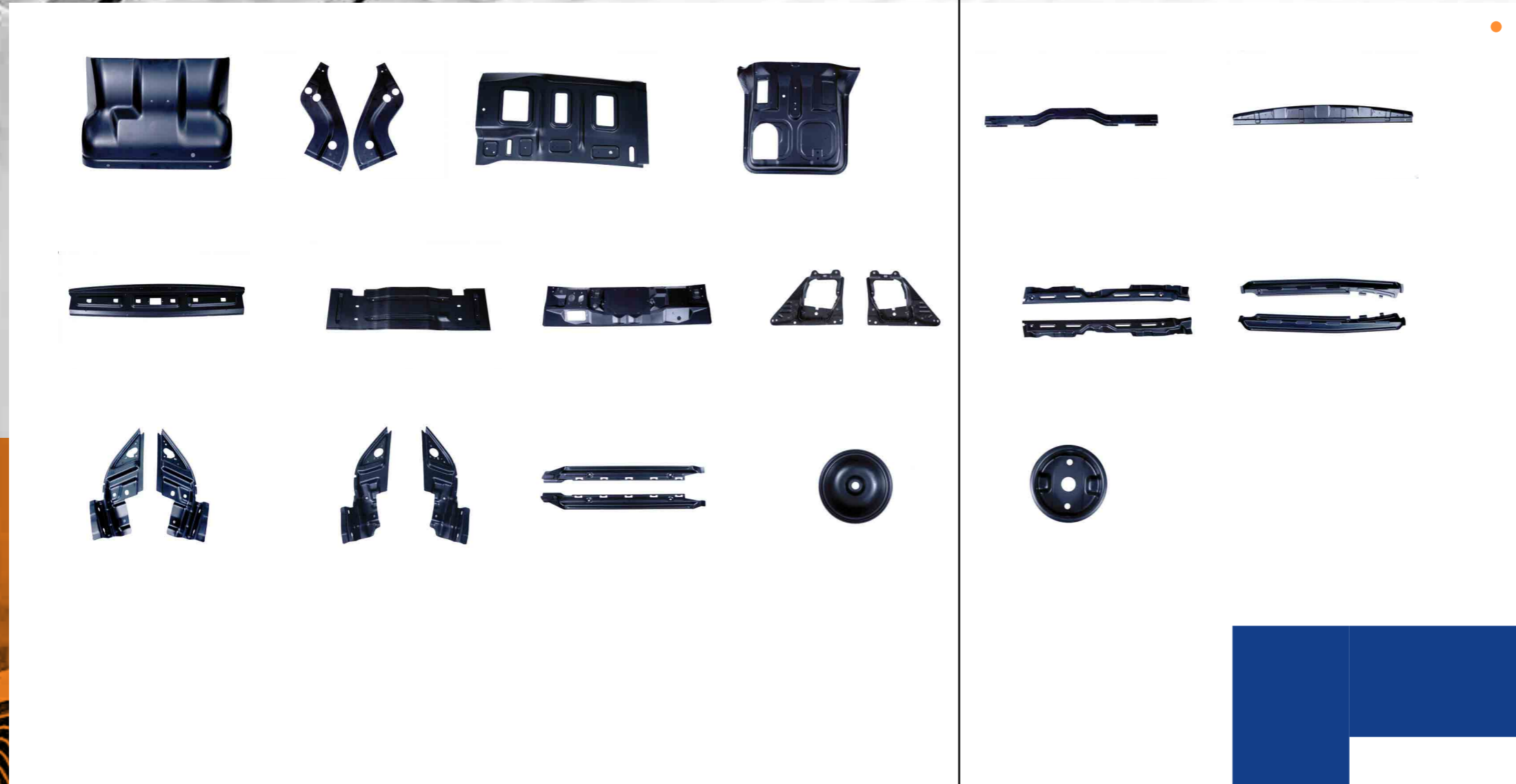
Venturing into the domain of automobile components, we have stood tall as a name synonymous with excellence. We specialize in crafting sheet metal components of large and medium sizes, as well as intricate assemblies.





**EXCELLENCE
IS OUR EXPERTISE.**





Leading
brilliance in
the automobile
manufacturing
industry

AUTOMOBILE
PRODUCTS



Pioneering
excellence in
the electrical
contracting and
manufacturing
industry



MANUFACTURING
PRODUCTS



EV LINE



Three Categories of EV Line:
Cargo, Passenger and Garbage Vehicle





EV SPECIFICATIONS



DESCRIPTION	SPECIFICATIONS
Overall Size	2790 X 1690 X 990
Motor	1200W BLDC
Motor Power	5.2 KW
Battery Type	Lithium Ferrous Phosphate
No. of Batteries	01 No. (51.2 V)
Battery Charger	SMPS with Voltage Protection
Operating Voltage	48 V
Converter	DC to DC 12V
Maximum Load Capacity	500 KGS
Energy Consumption	4 Units (Full Charge)
Mileage	80 - 100 KM / Charge
Ground Clearance	230mm
Suspension Front	43mm Telescopic Hydraulic Shock Absorber
Suspension Rear	Leaf Spring
Tyre Front & Rear	3.75" X 12"

DESCRIPTION	SPECIFICATIONS
Brakes Front	Lever Operated Drum Brake
Brakes Rear	Pedal Operated Drum Brake
Parking Brake	Mechanical Hand Operated Brake
Speedometer	Digital
Head Light	Halogen
Transmission	Differential-2 Gear Shift Type



SLITTING LINE



MACHINE SPECIFICATIONS	UNITS	VALUES
------------------------	-------	--------

Coil Width Maximum	mm	1850
--------------------	----	------

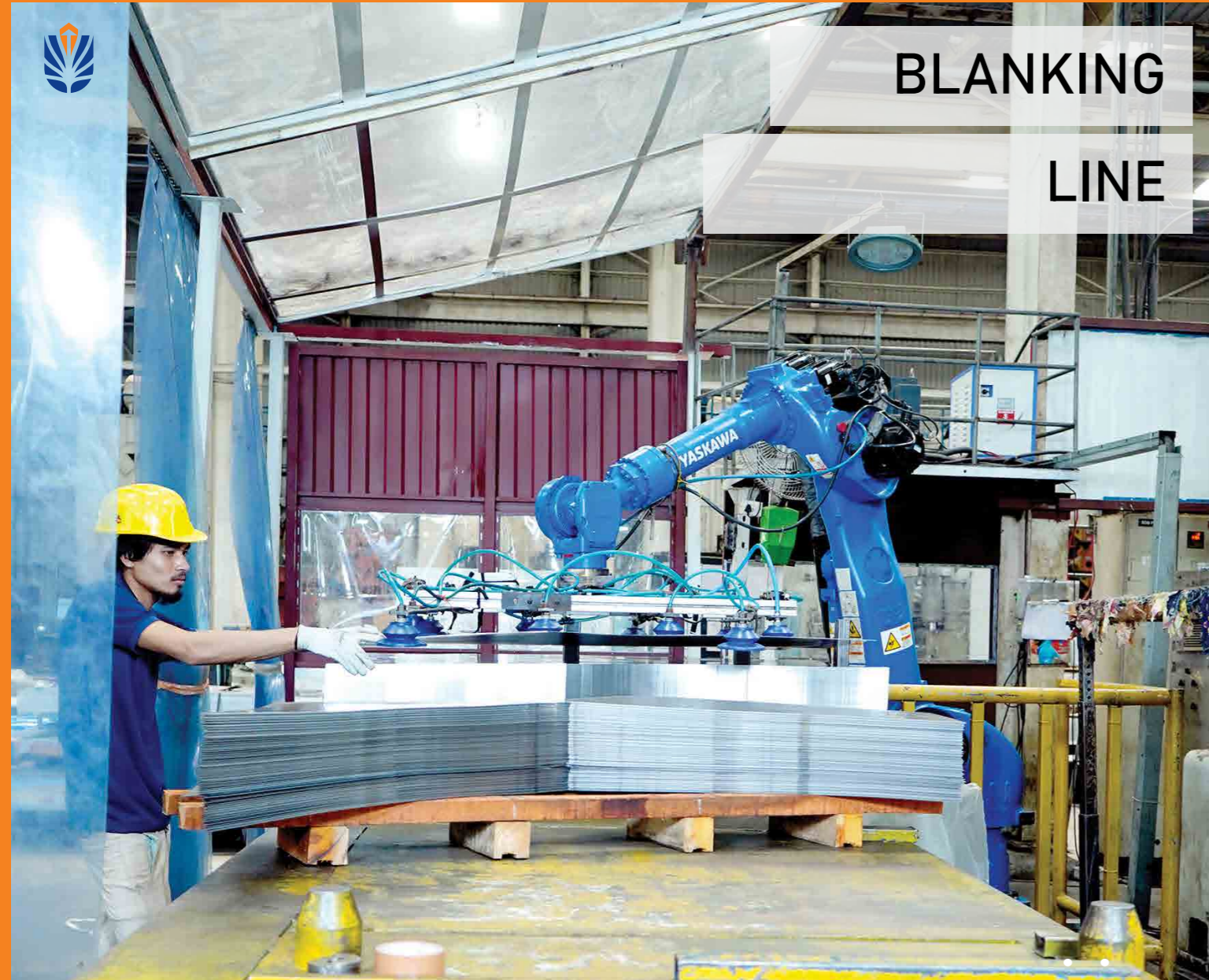
CRCA Sheet Thick	mm	0.4-4
------------------	----	-------

Coil OD Maximum	mm	2000
-----------------	----	------

Coil OD Maximum	mm	Dia 508-610
-----------------	----	-------------



BLANKING LINE



MACHINE SPECIFICATIONS	UNITS	VALUES
------------------------	-------	--------

Thick	mm	0.4-6
-------	----	-------

Coil Width	mm	150-1850
------------	----	----------

Press Capacity	Ton	400
----------------	-----	-----

Maximum Thickness	mm	4.0
-------------------	----	-----



**SHEARING
LINE**





CNC

MACHINING



Machine Maker: Ace Micromatics

Model: Super Jobber-500 LM



MACHINE CAPACITY	UNITS	VALUES
------------------	-------	--------

Swing Over Carriage	mm	260
---------------------	----	-----

Chuck Size	mm	200
------------	----	-----

Maximum Turning Length	mm	500
------------------------	----	-----

Distance Between Centres	mm	550
--------------------------	----	-----

Maximum Bar Capacity	mm	42*
----------------------	----	-----

Bore Through Spindle	mm	63
----------------------	----	----



CNC LASER CUTTING MACHINE

Machine Maker: LVD



MACHINE CAPACITY	UNITS	VALUES
------------------	-------	--------

Laser Power	KW	1
-------------	----	---

Sheet Size	mm	1500*3000
------------	----	-----------

(Round, Square and Rectangles Shapes)





CNC PRESS BRAKE

Machine Maker: Amada & Hindustan Hydraulics

MACHINE CAPACITY

UNITS

VALUES

Press Capacity

Ton

120

Plate Thickness

mm

Max 12*3100, Max 20*205





HPS MACHINE

HPS MACHINE - C Line Technical Data

SL. NO.	MACHINE NO.	MAKE	CAPACITY (TON)	DAY LIGHT (MM)		BED (MM)		SLIDE DIMENSIONS (MM)		SLIDE ADJUSTMENT (MM)	CUSHION
				MIN	MAX	L-R	F-B	L-R	F-B		
37	C1	DANLY	800 T	2440	3500	3500	2440	1080	600	609	NO
38	C2	DANLY	800 T	2000	3500	3500	2000	1380	870	609	YES
39	C3	DANLY	800 T	2430	2720	2720	2430	1380	870	609	YES
40	C4	DANLY	800 T	2550	3230	3230	2550	1380	870	609	YES
41	C5	DANLY	800 T	2550	3230	2790	1830	1050	850	609	NO
42	C6	VERSON	1000 T	800	1000	2790	1830	1050	850	200	NO
43	C7	CLEARING NIAGARA	800 T	1830	2790	2790	1830	1050	850	200	NO

HPS MACHINE - B Line Technical Data

SL. NO.	MACHINE NO.	MAKE	CAPACITY (TON)	DAY LIGHT (MM)		BED (MM)		SLIDE DIMENSIONS (MM)		SLIDE ADJUSTMENT (MM)	CUSHION
				MIN	MAX	L-R	F-B	L-R	F-B		
32	C12	VERSON	680 T	850	965	2100	1400	2100	1200	125	YES
33	C11	UBITECH	300 T	710	900	2140	1370	1900	1200	190	NO
34	C10	AIDA	300 T	700	850	2150	1400	1900	1200	150	NO
35	C9	AIDA	300 T	700	850	2150	1400	1900	1200	150	NO
36	C8	BRUPER	800 T	840	965	2100	1400	2100	1200	125	YES



HPS LINE A

LPS MACHINE - A Line Technical Data

SL. NO.	MACHINE NO.	MAKE	CAPACITY (TON)	DAY LIGHT (MM)		BED (MM)		SLIDE DIMENSIONS (MM)		SLIDE ADJUSTMENT (MM)	CUSHION
				MIN	MAX	L-R	F-B	L-R	F-B		
01	A1	UBITECH	200 T	490	590	1010	820	1000	850	100	NO
02	A2	UBITECH	200 T	400	480	1260	760	610	860	80	NO
03	A3	UBITECH	150 T	460	500	1080	680	900	580	40	NO
04	A4	KOMATSU	200 T	400	480	1450	850	850	650	80	NO
05	A5	UBITECH	200 T	420	510	1270	760	1100	750	90	YES
06	A6	UBITECH	200 T	420	520	1270	900	1250	950	100	YES

LPS MACHINE - B Line Technical Data

SL. NO.	MACHINE NO.	MAKE	CAPACITY (TON)	DAY LIGHT (MM)		BED (MM)		SLIDE DIMENSIONS (MM)		SLIDE ADJUSTMENT (MM)	CUSHION
				MIN	MAX	L-R	F-B	L-R	F-B		
07	B1	UBITECH	400 T	480	610	1330	900	1250	940	130	NO
08	B2	UBITECH	400 T	480	630	1330	900	1250	940	150	NO
09	B3	UBITECH	400 T	480	610	1330	900	1250	940	130	NO
10	B4	UBITECH	400 T	440	500	1500	900	1250	800	60	NO
11	B5	UBITECH	400 T	440	500	1500	900	1250	800	60	NO
12	B6	UBITECH	160 T	600	700	1400	800	1250	900	100	YES
13	B7	UBITECH	160 T	600	700	1400	800	1250	900	100	NO
14	B8	UBITECH	250 T	550	700	1400	800	1250	900	150	NO
15	B9	UBITECH	250 T	550	700	1400	800	1250	900	150	NO
16	B10	UBITECH	250 T	550	700	1400	800	1250	900	150	YES
17	B11	UBITECH	150 T	420	500	1000	700	910	510	80	NO
18	B12	AIDA	150 T	330	430	1300	600	670	500	100	NO



LPS LINE 2

HPS MACHINE - A Line Technical Data

SL. NO.	MACHINE NO.	MAKE	CAPACITY (TON)	DAY LIGHT (MM)		BED (MM)		SLIDE DIMENSIONS (MM)		SLIDE ADJUSTMENT (MM)	CUSHION
				MIN	MAX	L-R	F-B	L-R	F-B		
25	A1	VERSON	600 T	710	870	3040	1530	3040	1520	160	YES
26	A2	UBITECH	400 T	725	900	2440	1220	2400	1220	175	NO
27	A3	VERSON	400 T	850	985	2000	1360	2400	1520	135	NO
28	A4	EAGLE	400 T	725	900	2420	1220	2180	1220	175	NO
29	A5	MCKAY WARCO	400 T	650	900	2440	1370	2440	1370	250	YES
30	A6	WILKINS & MITCHELL	400 T	850	900	1900	1200	2430	1200	50	NO
31	A7	USI CLEARING	400 T	725	900	3040	1520	2160	1320	175	NO

HPS MACHINE - B Line Technical Data

SL. NO.	MACHINE NO.	MAKE	CAPACITY (TON)	DAY LIGHT (MM)		BED (MM)		SLIDE DIMENSIONS (MM)		SLIDE ADJUSTMENT (MM)	CUSHION
				MIN	MAX	L-R	F-B	L-R	F-B		
32	C12	VERSON	680 T	850	965	2100	1400	2100	1200	125	YES
33	C11	UBITECH	300 T	710	900	2140	1370	1900	1200	190	NO
34	C10	AIDA	300 T	700	850	2150	1400	1900	1200	150	NO
35	C9	AIDA	300 T	700	850	2150	1400	1900	1200	150	NO
36	C8	BRUPER	800 T	840	965	2150	1400	2100	1200	125	YES

LPS MACHINE - D Line Technical Data

19	D1	AIDA	400 T	490	600	900	910	560	1010	110	YES
20	D2	VERSON	400 T	420	520	1270	780	910	660	100	YES
21	D3	UBITECH	200 T	420	510	1270	760	1100	750	90	YES
22	D4	UBITECH	200 T	480	520	1500	1100	1500	1100	40	NO
23	D5	WEINGARTEN	400 T	480	610	1500	1400	1400	1400	130	YES
24	D6	UBITECH	200 T	480	610	1160	1100	1160	1000	130	YES



TOOL ROOM FACILITY





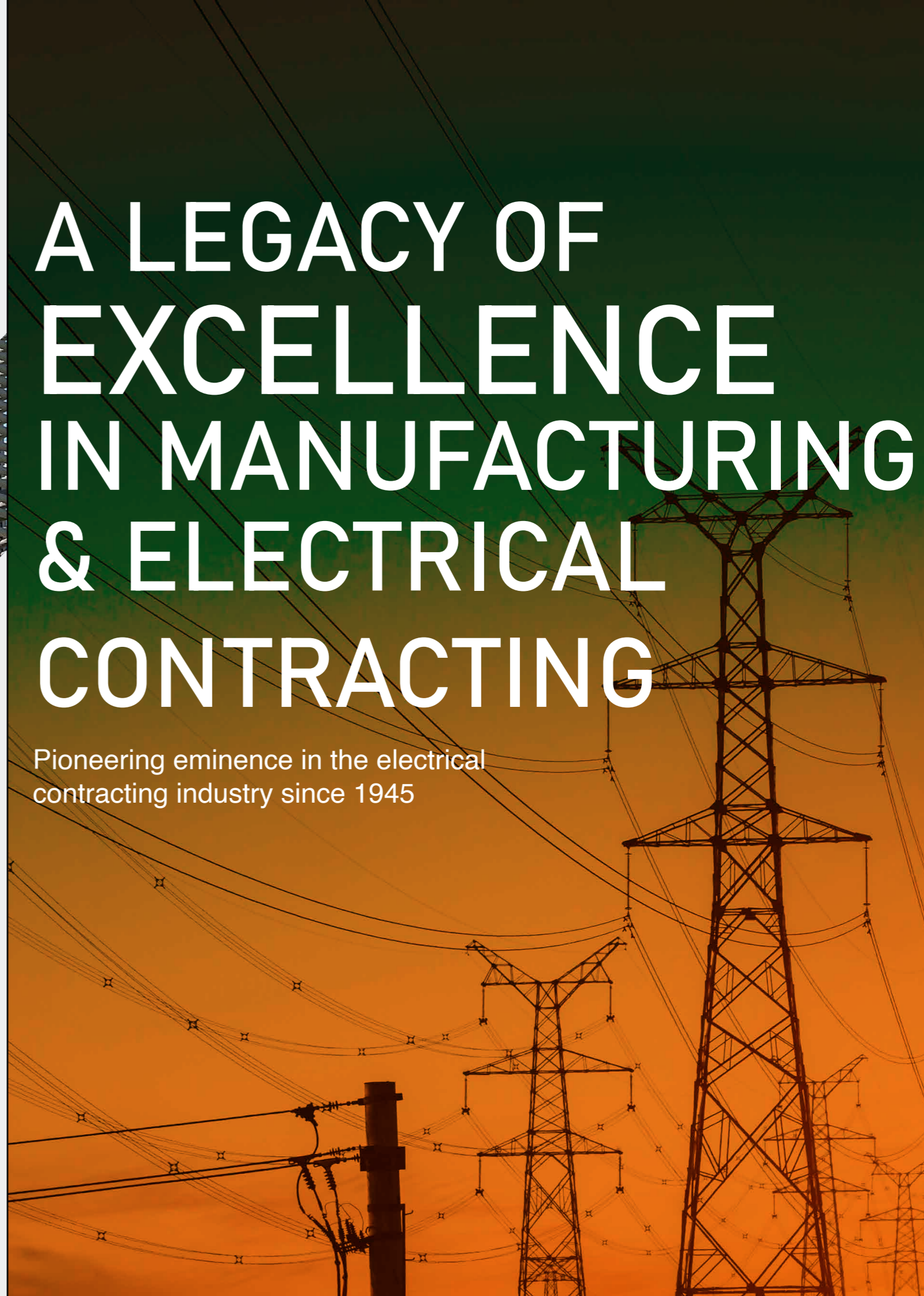
POWER PRESS





A LEGACY OF EXCELLENCE IN MANUFACTURING & ELECTRICAL CONTRACTING

Pioneering eminence in the electrical
contracting industry since 1945





● EV 3 WHEELER



● STEEL PLANT



● STEEL PLANT SHOP FLOOR



● FG STORAGE AREA



LASER CUTTING FACILITY 1 KW SIZE 1500 MM*3000MM



HUGE TOOLS STORAGE AREA ●



SLITTING LINE MAX 1850 COIL WIDTH, 30 TON CAPACITY



WELDING FACILITY



● EV 3 WHEELER-LOADER



● COIL STORAGE AREA

OUR CLIENTS & PARTNERS

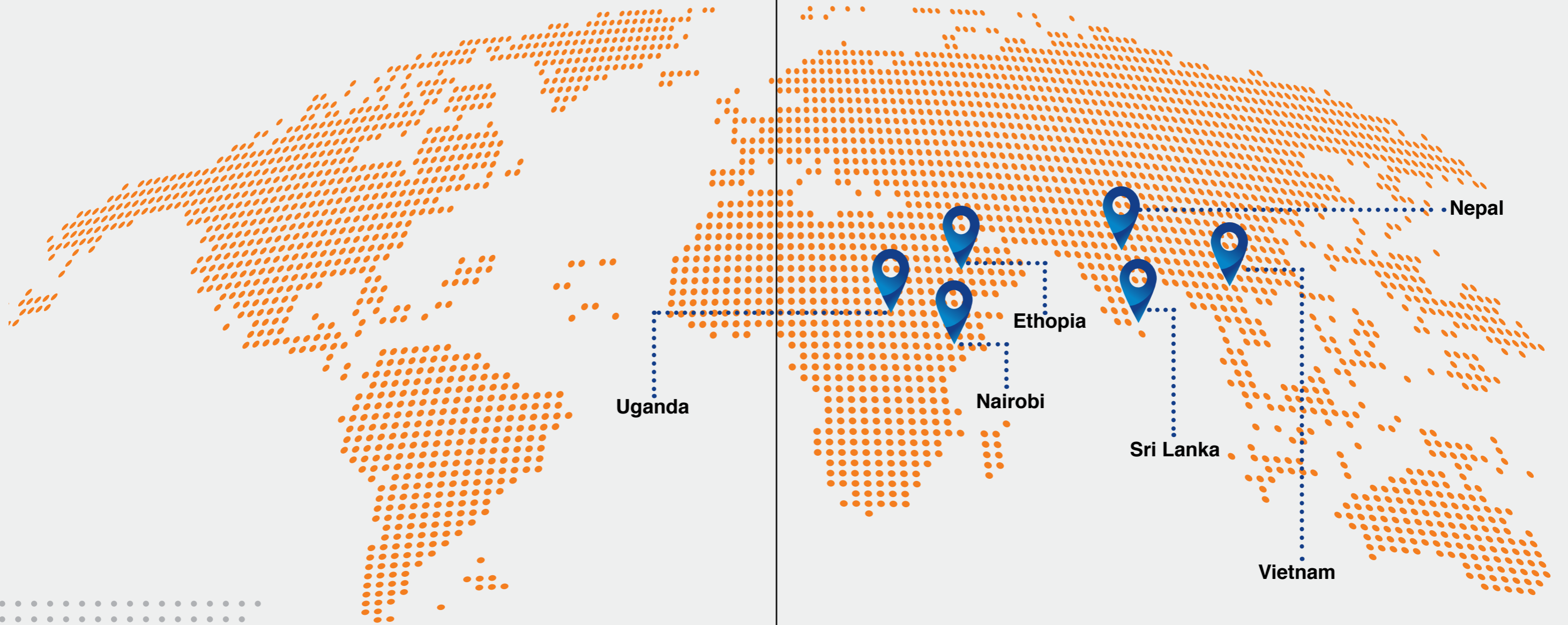
Esteemed clientele
who place their
trust in us





Providing Comprehensive
ELECTRICAL SERVICES
across the length and
breadth of India

**OUR REGIONAL
INSIGHTS**



OUR GLOBAL NETWORK





EMPOWERING INDIA

